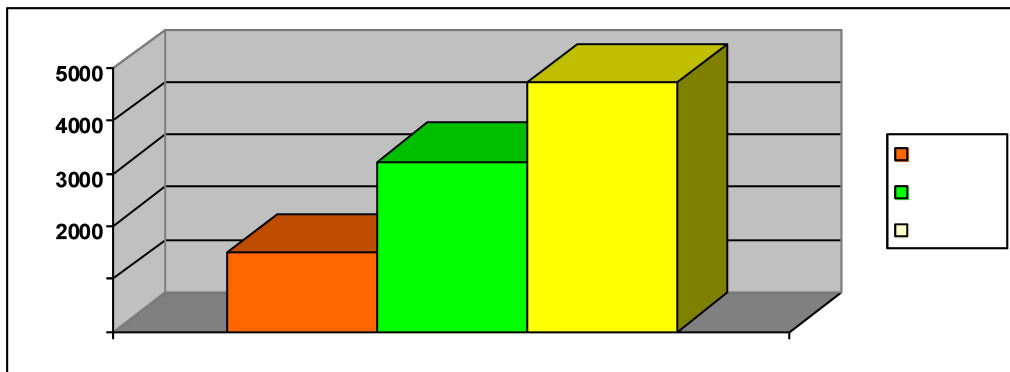


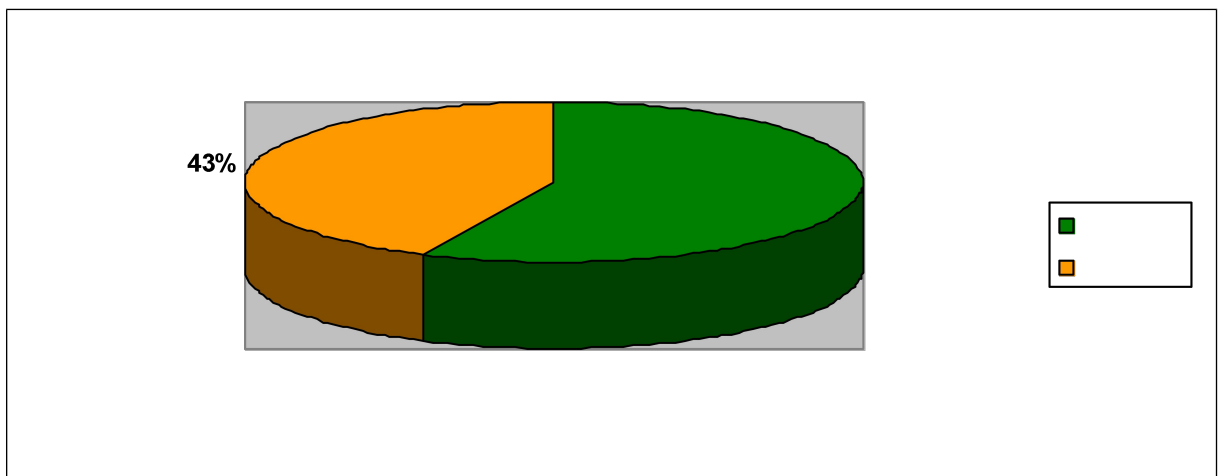
REPORT ATTIVITA' DEL SERVIZIO PUNTO INFORMATIVO Al 30.11.2014

Statistiche attività

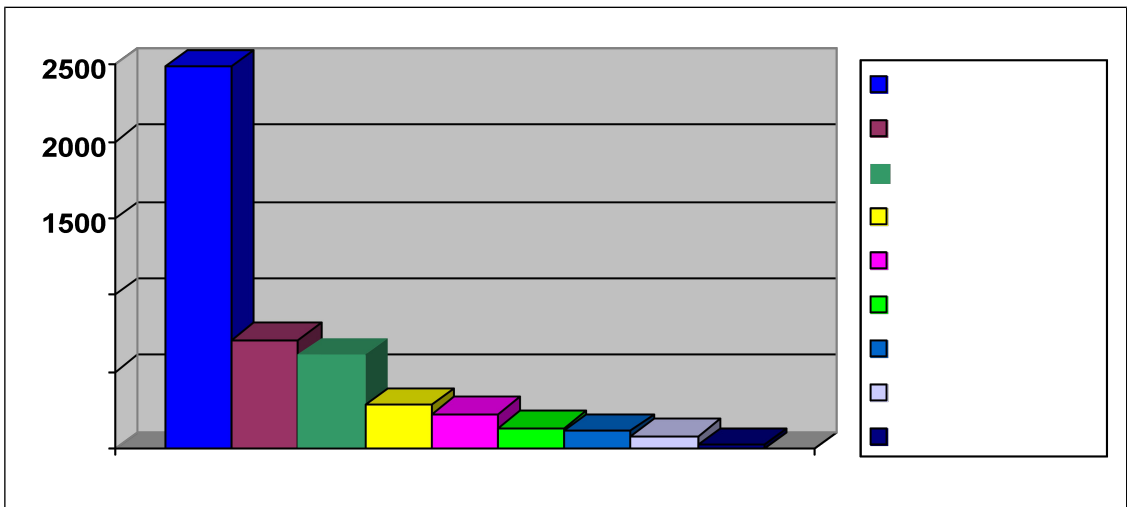
Tav.1 Totale accesso al 30.11.2014



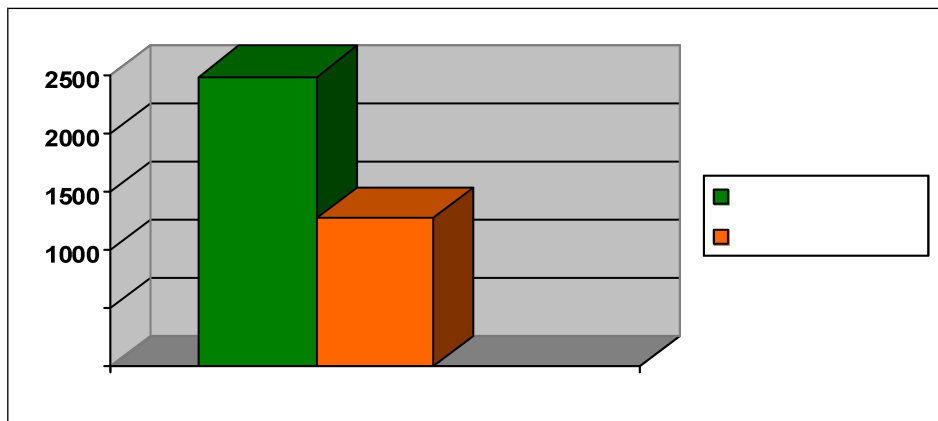
Tav.2 Accesso cittadini



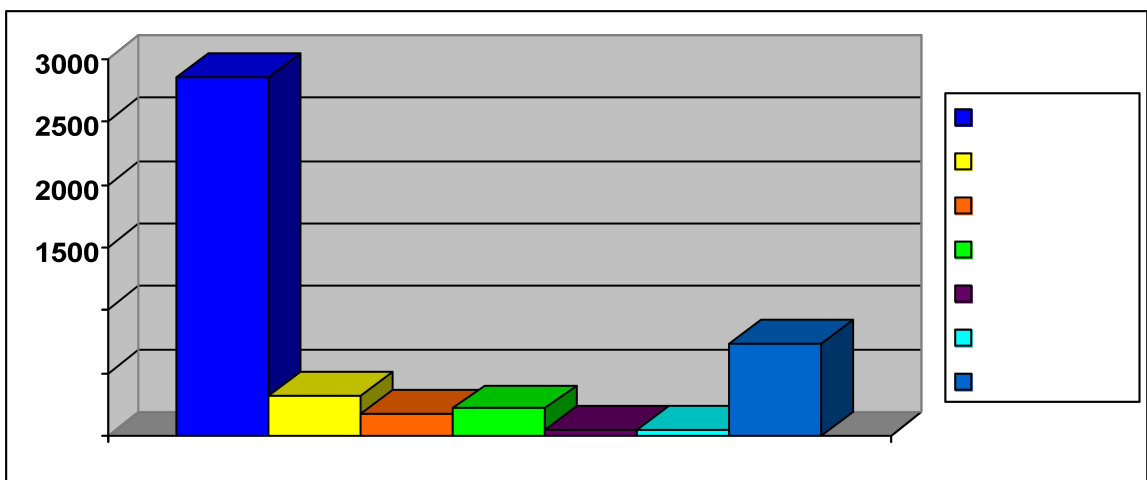
Tav.3 Provenienza delle richieste



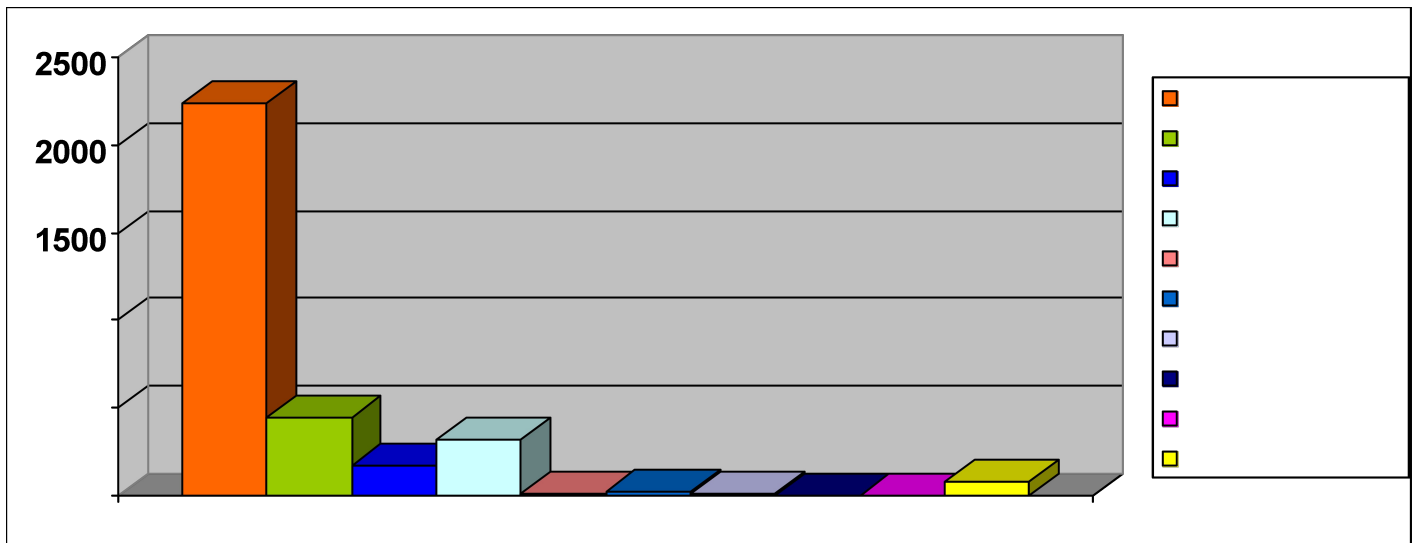
Tav.4 Provincia di Milano



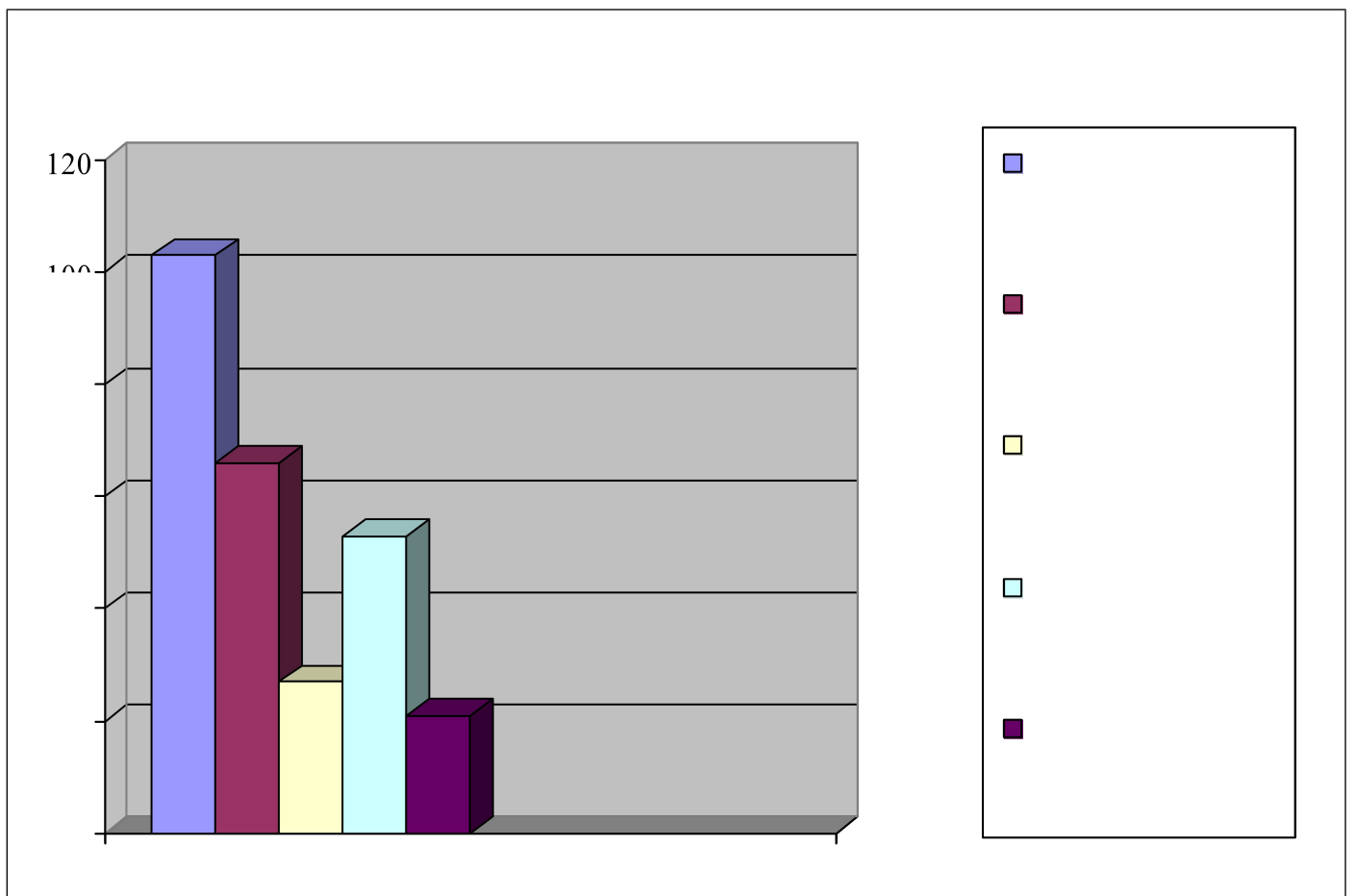
Tav. 5 Macroaree d'intervento



Tav. 6 Interventi in ambito civile



Tav. 7 Interventi nell'ambito dell'adozione



A cura degli operatori del Punto Informativo: C. Cavazzoni, P. Magni, E. Marta, A. Pisoni